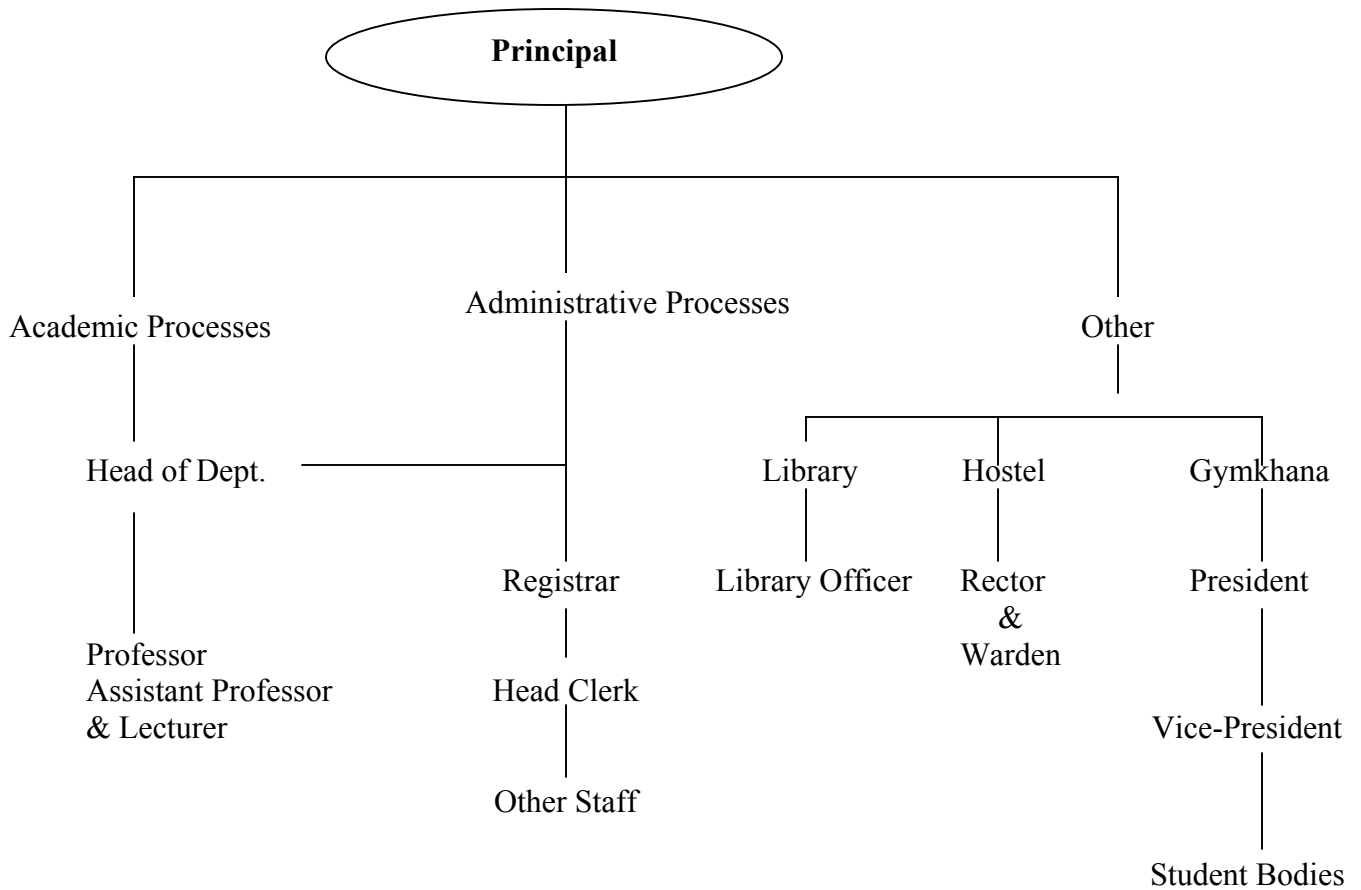


iii) Decision Making Process

All decisions are taken through consensus with the employees and consulting with higher authority

Channels of Supervision is as indicated in the tree below.



**ORGANIZTIONAL CHART AT INSTITUTE LEVEL**

iii. Accountability:-

The institute keeps a check on accountability through the following procedures.

1. Annual confidential reports are submitted by the officers. Which also includes self appraisal by the employees?
2. Every teacher is assessed by the students through a written feed-back perform at the end of each semester.